



## **RMS Equipment LLC**

1545 Industrial Parkway

Akron, Ohio, USA 44310

Tel : ++1 330 564 1360

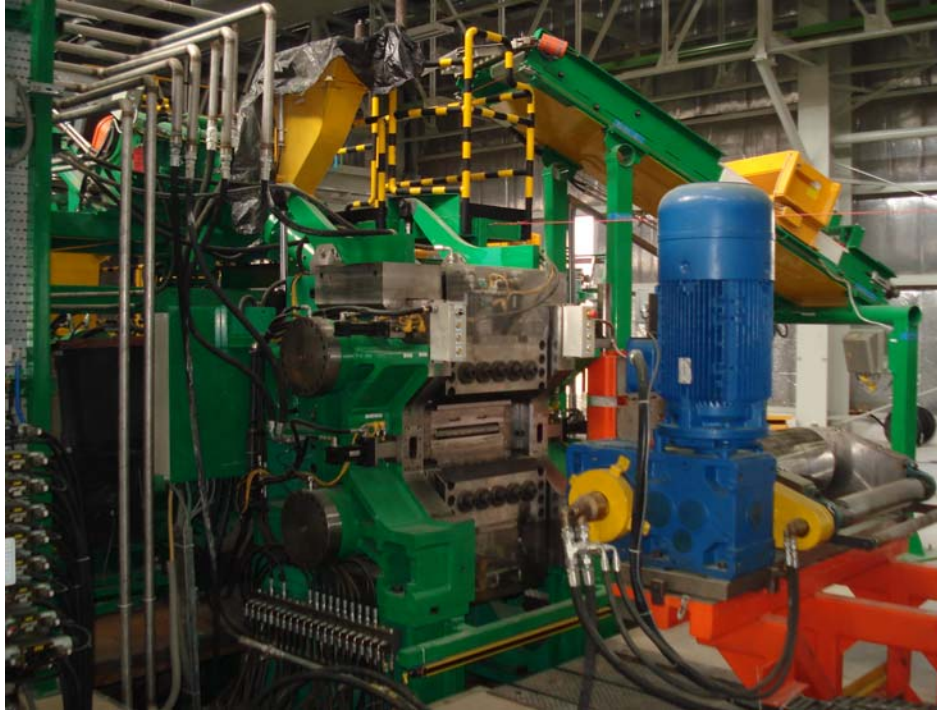
Fax : ++1 330 564 1389

Email : [rmssales@rmsequip.com](mailto:rmssales@rmsequip.com)

Web : [www.rmsequip.com](http://www.rmsequip.com)

---

## **RMS SINGLE ROLL ROLLER DIE (SRRD)**



Today's ever shrinking dimensional tolerances have created a demand that cannot be satisfied by conventional pressure head extrusion systems. The solution to this problem is the RMS Single Roll Roller Die (SRRD) that combines the flexibility and economy of a simple extruder head with the accuracy and control of a calender. This carefully engineered system incorporates controlled feed to a modern cold feed extruder, a head which by its design provides laminar flow with equal velocity and pressure distribution combined with the "zero pressure" feature of the Single Roll Roller Die. This enables high quality stable products with excellent dimensional characteristics to be extruded consistently.

### **What are the advantages?**

- Extrusions are produced trim-less.
- Improved dimensional accuracy of profiles.
- Maintains dimensional consistency at different speeds, pressures and temperatures.
- Virtually eliminates die swell as material is pulled rather than pushed.
- Enables profiles to be extruded at increased line speeds.
- Reduces extrusion temperatures due to lower extruder head pressures.
- Hydraulic die clamping for quick die changes.
- Profiles with tapered edges can reduce the risk of air entrapment in the tire assembly.
- Inexpensive and quick change dies for different profiles.

## **RMS Pride – A Tradition**

**Member of the Pettibone Tire Equipment Group**

## RMS SRRD

### TYPICAL SET-UPS INCLUDE

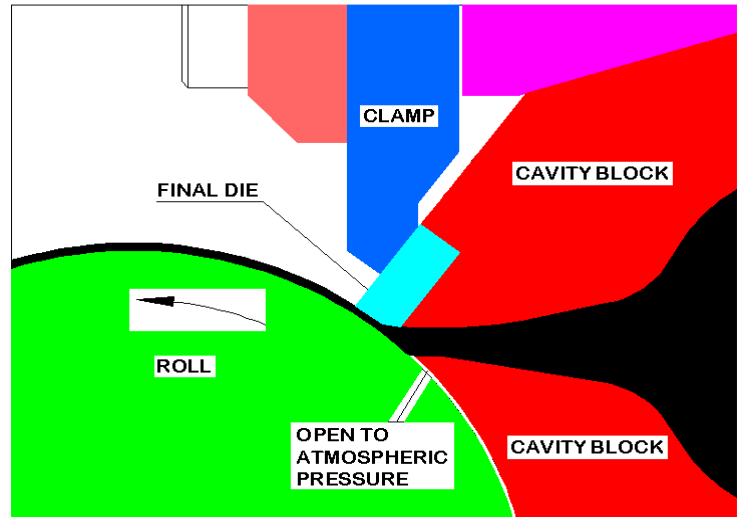
- Fixed or adjustable main roll.
- Single or multiple (up to quadruplex) compound versions.
- Single or multiple extrudate produced simultaneously.
- Suitable for cold or hot feed extruder systems.
- Can be used with any cold or hot feed extruder.

### OPERATING PRINCIPLES

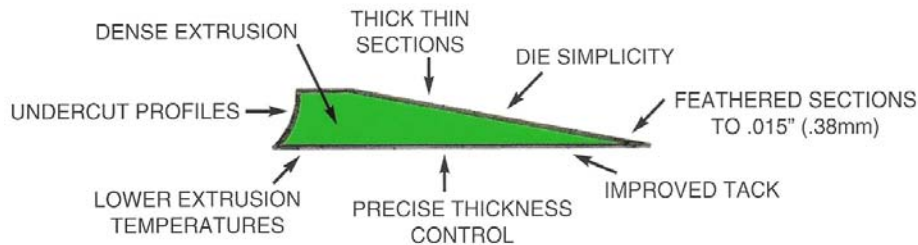
The pressure builds up in the head section of the SRRD the same as in a conventional extrusion head.

The advantage is in the specially designed pre-form die and roll combination. The pre-form enables the high pressure to be released when the compound reaches the roll.

The roll wipes the compound past the final die in a short distance similar to a calender. Low pressure equals low die swell, this produces very accurate strips.



### PRODUCT ADVANTAGES



### STANDARD SIZES AVAILABLE

	SRRD 500	SRRD 650	SRRD 1200
Maximum width of extrusions	500 mm *	650 mm *	1200 mm *
Minimum thickness of strip or profile	0.8 mm *	0.8 mm *	0.8 mm *
Maximum thickness of strip or profile	12 mm *	12 mm *	7.5 mm *
Maximum line speed	35 meters/minute *	35 meters/minute *	35 meters/minute*

\* Other sizes can be provided upon request

### OTHER RMS EQUIPMENT

- Single and Co-Extrusion Heads
- Downstream Equipment
- Mini Calenders
- 1<sup>st</sup> & 2<sup>nd</sup> Stage Tire Building Machines
- Pin & Smooth Barrel Extruders
- Slab Feeders
- Temperature Control Units
- Complexing or Component Pre-Assembly