



RMS Equipment LLC

1545 Industrial Parkway

Akron, Ohio, USA 44310

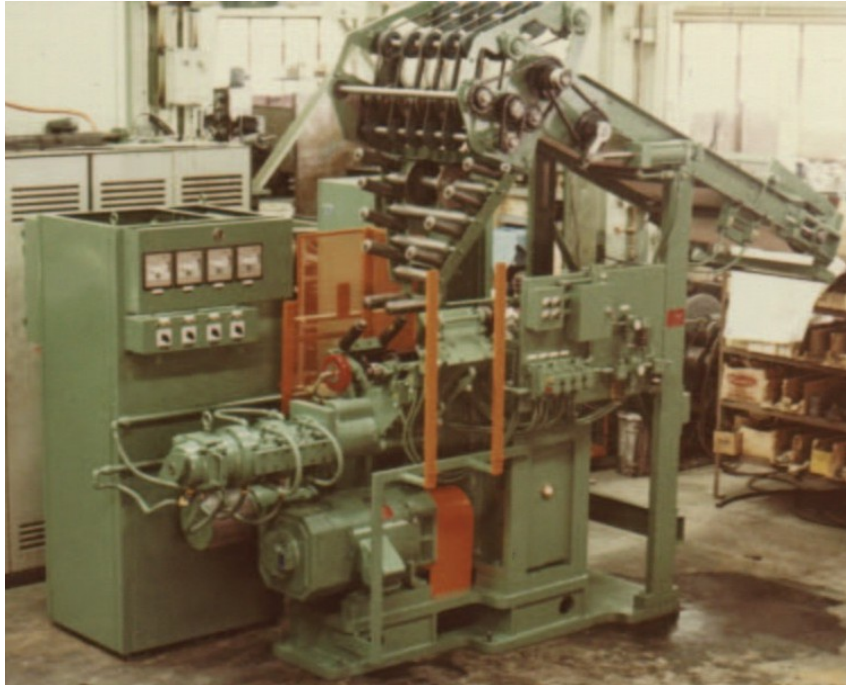
Tel : ++1 330 564 1360

Fax : ++1 330 564 1389

Email : rmssales@rmsequip.com

Web : www.rmsequip.com

TRANSFERMIX COLD FEED EXTRUDERS



The RMS series of Transfermix (TMIX) Cold Feed Rubber Extruders, uses a “plug flow” theory and the shearmix principle which allows the stock to “transfer” from the screw into the barrel grooves and then back into the screw. This principle accelerates the rate of shear as compared to a conventional impingement type extruder.

This Transfermix was specially developed to accommodate low tuber head pressures. It is designed to handle the range of materials from a mixture of natural rubber and synthetics to very high natural rubbers.

RMS Equipment Company is a major internationally recognized designer and manufacturer of state of the art extrusion and tire manufacturing equipment. Our equipment has been supplied to many of the major tire and general rubber product manufacturers and operate worldwide. Since 1917 we have been an integral part of the rubber industry and our equipment has been uniquely developed *within the industry for the industry*.

We continue our tradition of working closely with customers to design, manufacture and commission extrusion equipment that will meet or exceed their individual product requirements for accuracy, reliability, quality and higher productivity. This includes complex multi-extruder lines, single extruders, extrusion heads, single roll roller dies and slab feeders.

RMS Pride – A Tradition
Member of the Pettibone Tire Equipment Group

RMS TMIX SERIES

KEY FEATURES:

- Designed to transfer stock from screw flights into the barrel grooves and then back into the screw.
- Chopper area close to hopper rapidly breaks down the stock making it easier to plasticize.
- Accelerates rate of shear compared to smooth or pin barrel extruders.
- The design of this extruder incorporates a very high compression ratio in the screw and barrel design (up to 2.5:1) which makes it much less vulnerable to feeding inconsistencies.
- The extrusion end of the screw ensures an even pressure and flow with a minimum of pulsing.
- All areas of the process are temperature controlled so that temperature profiling can be accomplished.
- Cold feeding is accomplished using a slab feeder and ram stuffer (or powered feed roll – optional) to keep a constant supply of stock at the screw.

SIZES:

- RMS standard range of TMIX Extruders available: 83 to 200mm (3-1/4" to 8") screw diameters.
- Other sizes can be provided upon request.

NOTES:

- All extruder specifications are for the RMS standard extrusion systems. Specifications may change depending on specific requirements (ie. L/D ratios; motor horse-power; screw speeds; and reducer ratios).
- Machines are supplied as right hand. Left hand extruders can be supplied upon request.
- Customized modifications available depending on application.

OTHER RMS EQUIPMENT:

- Single and Co-Extrusion Heads
- Downstream Equipment
- Mini Calenders
- 1st & 2nd Stage Tire Building Machines
- Single Roll Roller Dies
- Slab Feeders
- Temperature Control Units
- Complexing or Component Pre-assembly